

### Log Installation Step 1



Locate screws holding in the glass and remove

### Log Installation Step 2



Carefully remove glass panel by pulling on the tabs located on the left and right side of the firebox lean the glass towards you and lift glass out. **Make sure not to drag glass as alignment pegs on bottom may damage module finish.**

### Log Installation Step 3

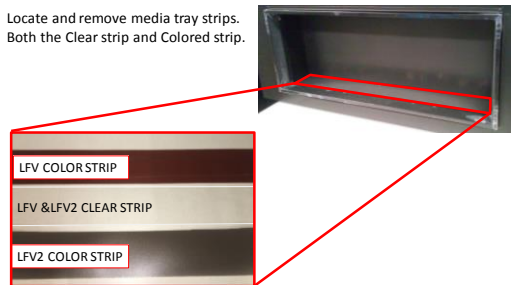


Open the Driftwood Log Set and locate the following:  
Log set, Smoked Glacier Crystals, LED bulbs

- Log Configurations:**  
 LfV40/15 & LfV2-40/15: (1)-40" Log Set  
 LfV60/15 & LfV2-60/15: (1)-60" Log Set  
 LfV80/15 & LfV2-80/15 : (2)-40" Log Sets  
 LfV100/15 & LfV2- 100/15: (1)-40" Log Set & (1)-60" Log Set  
 LfV120/15 & LfV2-120/15: (2)-60" Log Sets

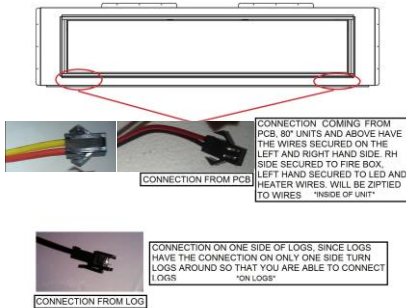
### Log Installation Step 4

Locate and remove media tray strips. Both the Clear strip and Colored strip.

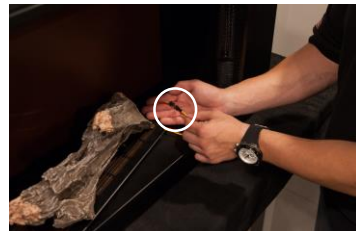


### Log Installation Step 5

EXAMPLE OF LOCATION OF CONNECTORS FOR LOGS  
(80" AND ABOVE WILL HAVE TWO CONNECTIONS)



### Log Installation Step 6



After you locating the wires inside the fireplace and the end of the driftwood logs. Plug in wires to each other.

## Log Installation Step 7



Place the driftwood logs in the center of the firebox so that it sits flush in the designated channel.

## Log Installation Step 8

LED EXAMPLE



Locate your LEDs inside the shipping box. Remove 1 log at a time and note orientation. Install the LEDs in the sockets, simply align the probes from the LEDs to the holes in the socket and insert until fully seated. Replace the removed log and repeat for the remaining logs.



## Log Installation Step 9



Add the smoked glacier crystals around the logs. Then replace glass in the front of the unit where it was first removed from.