



# Floating Shelf

## *Assembly & Installation*

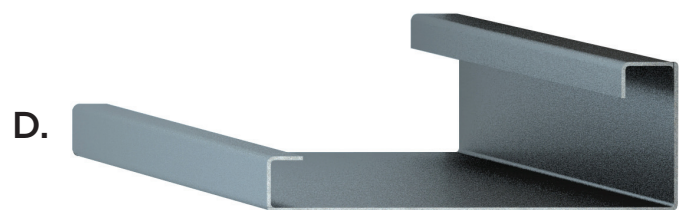


# Thank You!

Thank you for purchasing a Stoll Shelf! We are confident this quality product will last you for years to come. If you need further help or additional information regarding installation, please reach out to your local dealer for assistance.

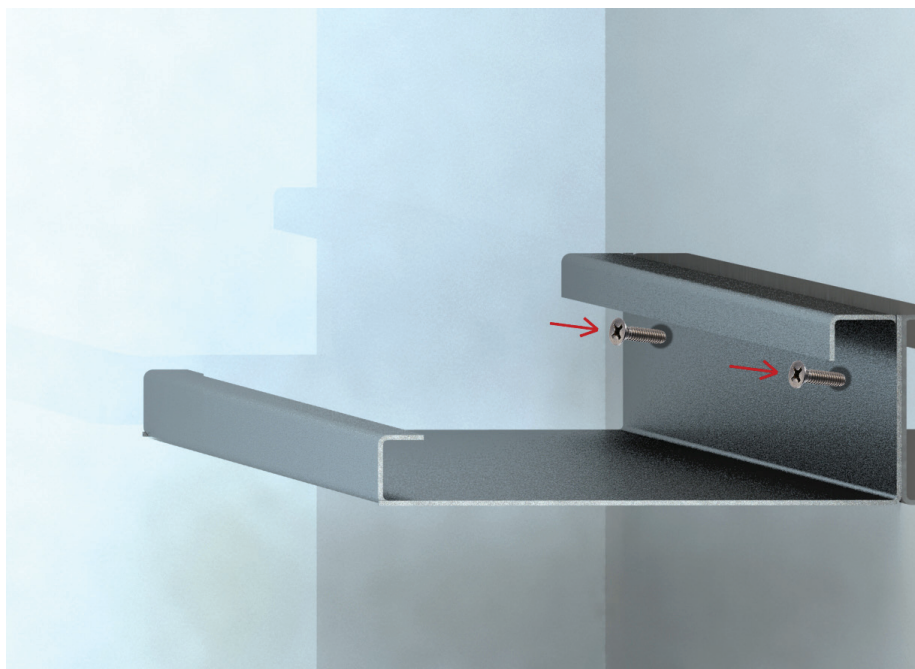
## Parts & Materials

- A. 3/16" Drill Bit
- B. 2.5" Wood Screws: 6
- C. Top Shelf Cap
- D. Shelf Backplate



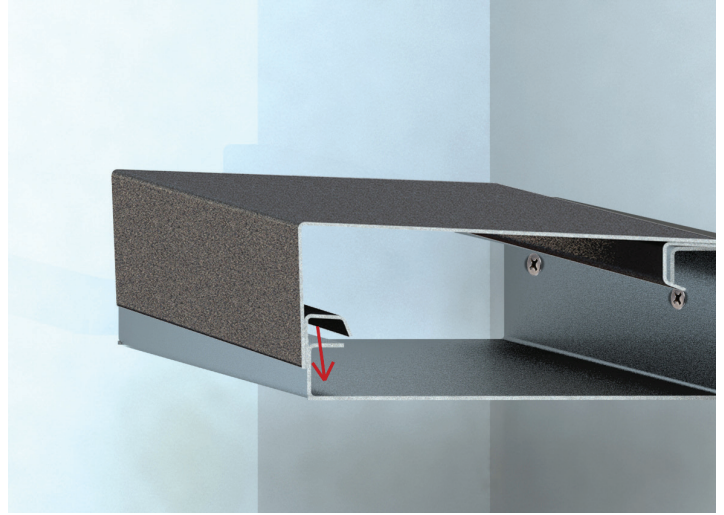
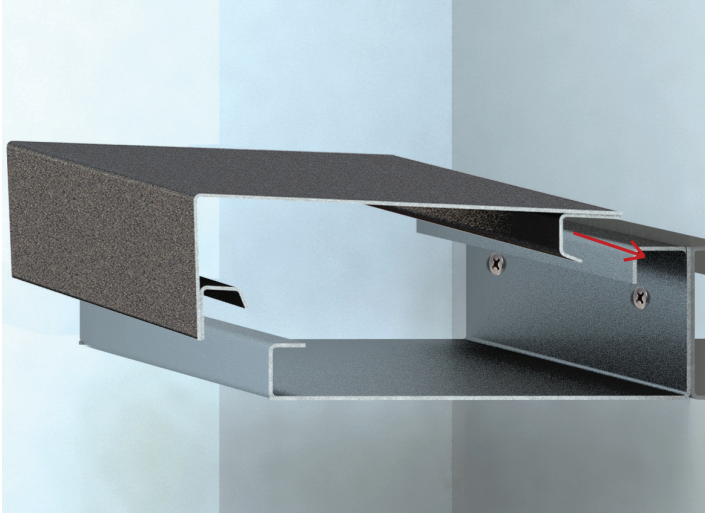
## Mounting

1. Separate the Shelf top cap from the backplate.
2. Position and level the backplate in desired location against wall/mounting surface.
3. Locate the studs in your wall (*if applicable*). Using the included 3/16" drill bit, drill pilot holes in the backplate 1" down from the top, and aligned with the located studs.
4. Secure in place with the provided screws. (*Masonry tapcons or metal self-tapping screws may be used if needed, but are not provided*)



## Assembly

5. Place the rear of the top cap onto the rear bracket of the backplate, and slide firmly into place (See Image 2).
6. Lower the front of the top cap onto the front bracket of the backplate, and press firmly into place.



## Lights & Bluetooth Package (optional)

7. If your shelf includes a Bluetooth light and speaker package, follow the steps below:
  - a. Plug the standard 110v plug into a nearby outlet. (Figure A)
  - b. Connect the black Live Wire and white Neutral Wire to a constant power source, or to the plug of your choice. (Figure B)

*Caution: Identify the panel circuit of the switch or outlet, and turn it OFF before working with wiring. Contact your electrician if you are unsure of the codes for your area or proper electrical wiring method.*

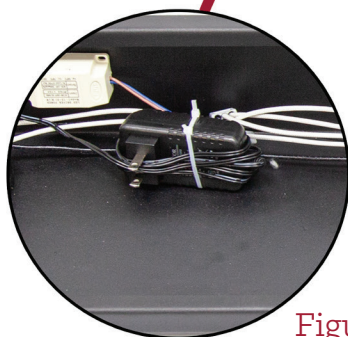


Figure A

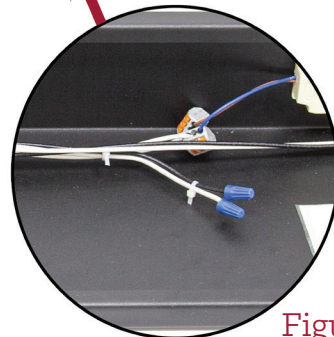


Figure B

## LED Lights Package *(optional)*

8. If your shelf includes led lights without the speaker package, follow the steps below:

- a. Insert the lights into the pre-drilled holes.
- b. Plug the standard 110v plug into a nearby outlet.

## Completion

9. Enjoy your newly installed Shelf!



## Cleaning & Maintenance

Your Stoll product can be cleaned using a damp cloth, or mild household cleaner. To avoid damage to the finish, cleaners containing ammonia or other harsh chemicals should be avoided.

## Warranty

Your Stoll Shelf is covered by a 5 year limited warranty. For more information, please visit [www.stollindustries.com/resources/](http://www.stollindustries.com/resources/). All warranty claims must be placed through your local dealer.



### WARNING

This product can expose you to chemicals including Carbon Black, which is known to the state of California to cause Cancer. For more information go to [www.P65Warnings.ca.gov](http://www.P65Warnings.ca.gov)